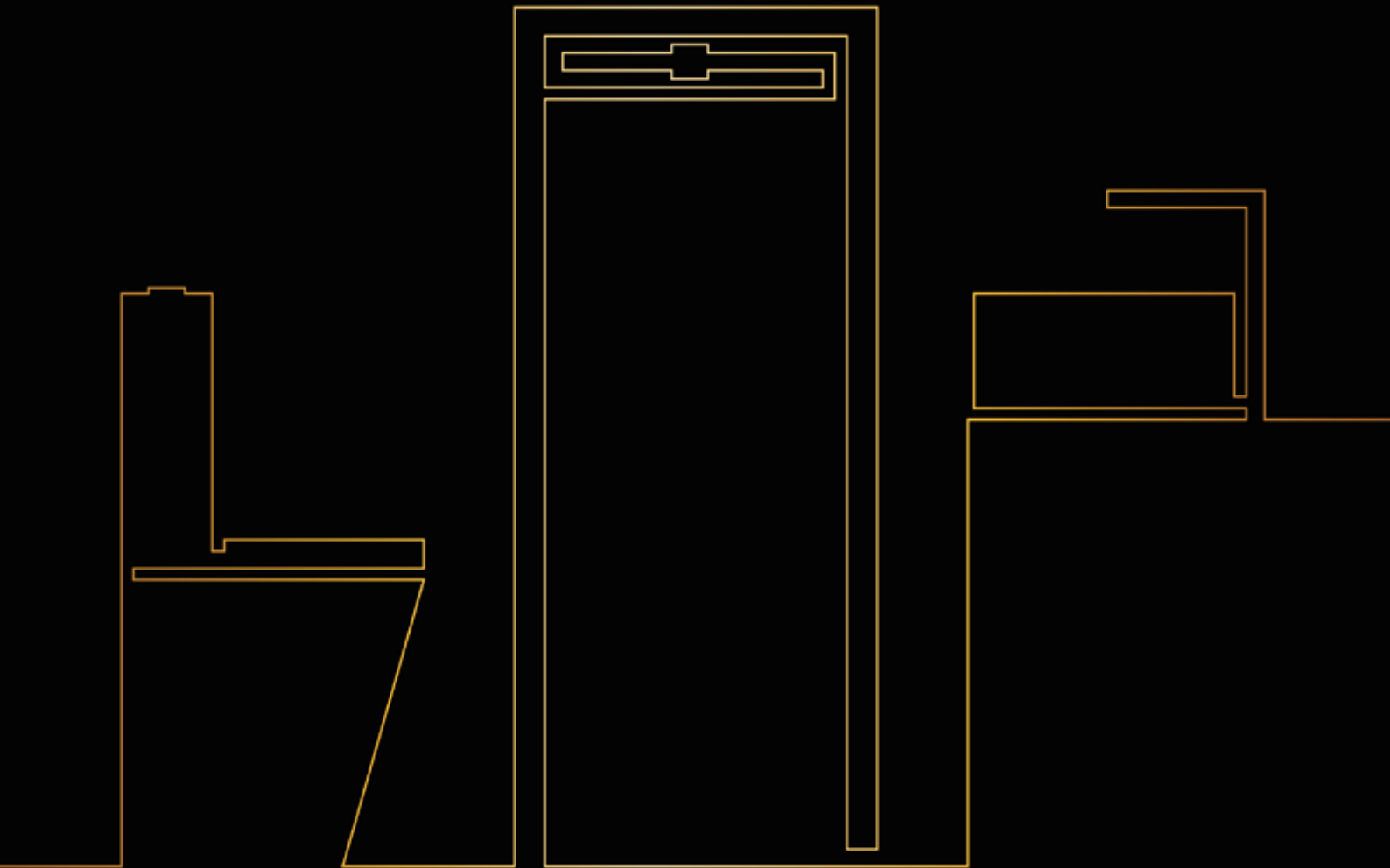


# MOOV LUX

Showertrays | Washbasins | Toilets and Bidets





## Shower Trays

Page 4



## Washbasins

Page 17



## Toilets and Bidets

Page 50





# Shower Trays



#### Acabamentos:

- |   |         |   |             |   |        |
|---|---------|---|-------------|---|--------|
|  | White   |  | Anthracite* |  | Black* |
|  | Cement* |  | Cream*      |   |        |

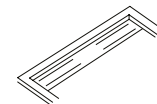
- White color bases with immediate delivery.

- \*Anthracite, Black, Cream and Cement base colors delivery time is 4 weeks.

Medidas apresentadas em centímetros. Acresce iva à taxa legal em vigor.

## Candor

### Shower Trays



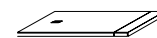
Rectangular grid in Stainless Steel, White, Black and Anthracite



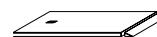
Texture Safe, Anti-Slip, Anti-Bacterial and UV-Resistant Surface



Repairable Surface



Customizable in length and width within the tabled measurements



Possibility of access ramp for people with some type of disability



Wide range of colors, upon request

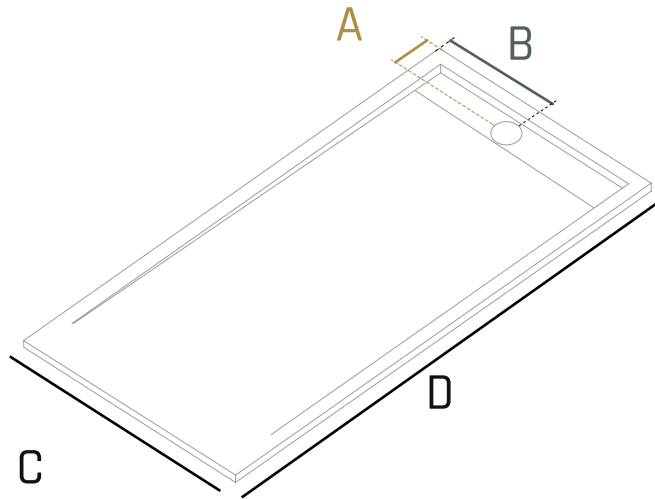


Removable siphon grid



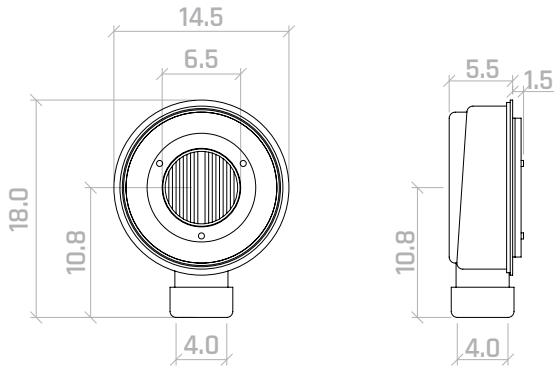
Thickness of 3cm





If the value “C = 70” the grid is 60 X 11 CM  
If the value “C = 80” the grid is 70 X 11 CM  
If the value “C = 90” the grid is 80 X 11 CM

*\*The “A” value is equal to the siphon distance in length,  
“B” is equal to the siphon distance in width.*



|   |     | C  |    |    |    |    |    |
|---|-----|----|----|----|----|----|----|
|   |     | 70 |    | 80 |    | 90 |    |
|   |     | A  | B  | A  | B  | A  | B  |
| D | 100 | 10 | 35 | 10 | 40 | 10 | 45 |
|   | 110 | 10 | 35 | 10 | 40 | 10 | 45 |
|   | 120 | 10 | 35 | 10 | 40 | 10 | 45 |
|   | 130 | 10 | 35 | 10 | 40 | 10 | 45 |
|   | 140 | 10 | 35 | 10 | 40 | 10 | 45 |
|   | 150 | 10 | 35 | 10 | 40 | 10 | 45 |
|   | 160 | 10 | 35 | 10 | 40 | 10 | 45 |
|   | 170 | 10 | 35 | 10 | 40 | 10 | 45 |
|   | 180 | 10 | 35 | 10 | 40 | 10 | 45 |
|   | 190 | 10 | 35 | 10 | 40 | 10 | 45 |
|   | 200 | 10 | 35 | 10 | 40 | 10 | 45 |

Mesures

70 x 100

70 x 110

70 x 120

70 x 130

70 x 140

70 x 150

70 x 160

70 x 170

70 x 180

70 x 190

70 x 200

Mesures

80 x 100

80 x 110

80 x 120

80 x 130

80 x 140

80 x 150

80 x 160

80 x 170

80 x 180

80 x 190

80 x 200

Mesures

90 x 100

90 x 110

90 x 120

90 x 130

90 x 140

90 x 150

90 x 160

90 x 170

90 x 180

90 x 190

90 x 200

- Bases cut to measure without finishing with a delivery time of 15 days
- White color bases with immediate delivery.
- Available with grille in white, black and anthracite finish
- Bases in Anthracite, Black, Cream and Cement, delivery time is 4 weeks.
- Valves and grids (in stainless steel) included in each base.
- Repair kit available.
- Option of loose valves.



## Silky

Shower Trays



Drain grate available in stainless steel or lacquered in white, black, anthracite, cement or cream.



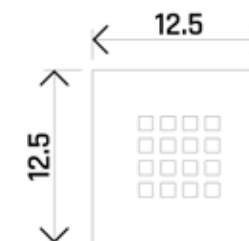
Safe textured surface, non-slip, antibacterial and resistant to UV rays.



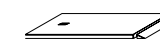
Repairable surface.



Customizable in length and width within the Tabled Measures.



Adaptable to bathroom spaces, with the possibility of being cut.



Possibilidade de rampa para acesso a pessoas com incapacidade motora.



Wide range of colors, upon request.



Removable siphon grid.



Thickness of 3cm.

### Finishes:



White



Anthracite



Black



Cement\*

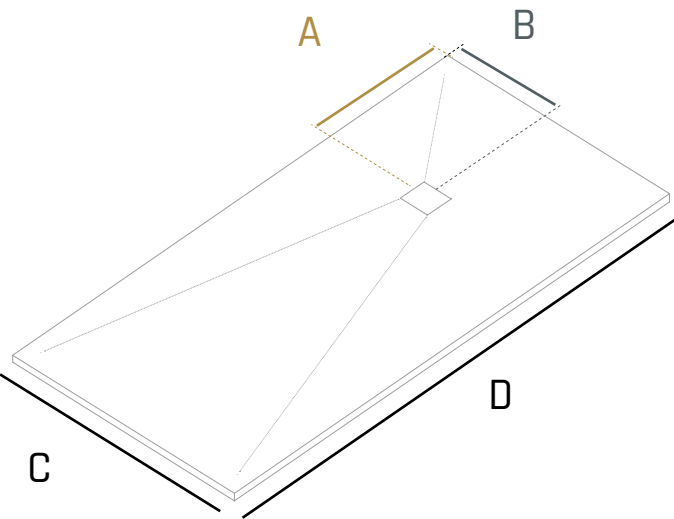


Cream\*

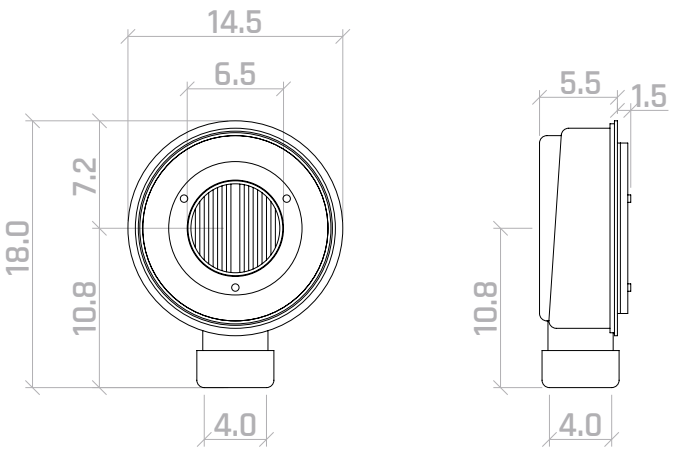
- Bases in white, black and anthracite with immediate delivery.

- Cream or cement colored bases with delivery time of 4 weeks.

Medidas apresentadas em centímetros. Acresce iva à taxa legal em vigor.



\* The value "A" is equal to the siphon distance in length, "B" is equal to the siphon distance in width.



D

|     | C  |    |    |    |    |    |     |    |
|-----|----|----|----|----|----|----|-----|----|
|     | 70 |    | 80 |    | 90 |    | 100 |    |
|     | A  | B  | A  | B  | A  | B  | A   | B  |
| 80  | -- | -- | 35 | 40 | 35 | 45 | --  | -- |
| 90  | 35 | 35 | 35 | 40 | 35 | 45 | --  | -- |
| 100 | 35 | 35 | 35 | 40 | 35 | 45 | 35  | 50 |
| 110 | 35 | 35 | 35 | 40 | 35 | 45 | 35  | 50 |
| 120 | 35 | 35 | 35 | 40 | 35 | 45 | 35  | 50 |
| 130 | 35 | 35 | 35 | 40 | 35 | 45 | 35  | 50 |
| 140 | 35 | 35 | 35 | 40 | 35 | 45 | 35  | 50 |
| 150 | 35 | 35 | 35 | 40 | 35 | 45 | 35  | 50 |
| 160 | 35 | 35 | 35 | 40 | 35 | 45 | 35  | 50 |
| 170 | 50 | 35 | 50 | 40 | 50 | 45 | 50  | 50 |
| 180 | 50 | 35 | 50 | 40 | 50 | 45 | 50  | 50 |
| 190 | 50 | 35 | 50 | 40 | 50 | 45 | 50  | 50 |
| 200 | 50 | 35 | 50 | 40 | 50 | 45 | 50  | 50 |
| 210 | -- | -- | 50 | 40 | 50 | 45 | --  | -- |
| 220 | -- | -- | 50 | 40 | 50 | 45 | --  | -- |

Mesures

70 x 90

70 x 100

70 x 110

70 x 120

70 x 130

70 x 140

70 x 150

70 x 160

70 x 170

70 x 180

70 x 190

70 x 200

Mesures

80 X 80

80 x 90

80 x 100

80 x 110

80 x 120

80 x 130

80 x 140

80 x 150

80 x 160

80 x 170

80 x 180

80 x 190

80 x 200

80 x 210

80 x 220

Mesures

90 x 80

90 X 90

90 x 100

90 x 110

90 x 120

90 x 130

90 x 140

90 x 150

90 x 160

90 x 170

90 x 180

90 x 190

90 x 200

Mesures

100 x 100

100 x 110

100 x 120

100 x 130

100 x 140

100 x 150

100 x 160

100 x 170

100 x 180

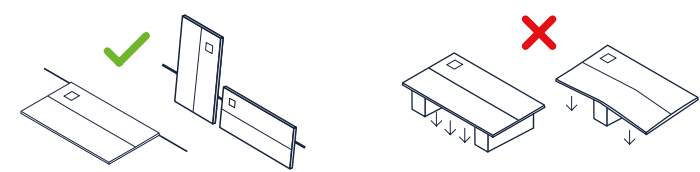
100 x 190

100 x 200

- Bases cut to measure without finishing with a delivery time of 15 days
- Valves and grids included in each base.
- Grille finished in white, black, anthracite cream or cement, available
- Repair kit available.
- Bulk valves available.

# Instruções de Uso

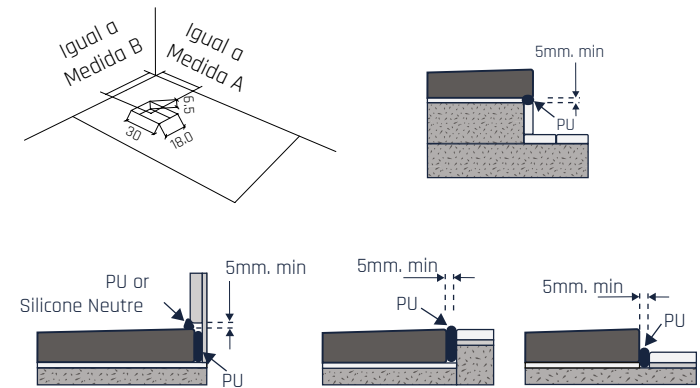
When storing, pay attention to the position in which you store them.



If you have underfloor heating, it is not recommended to apply the shower tray over it, as this could cause damage to the shower tray.

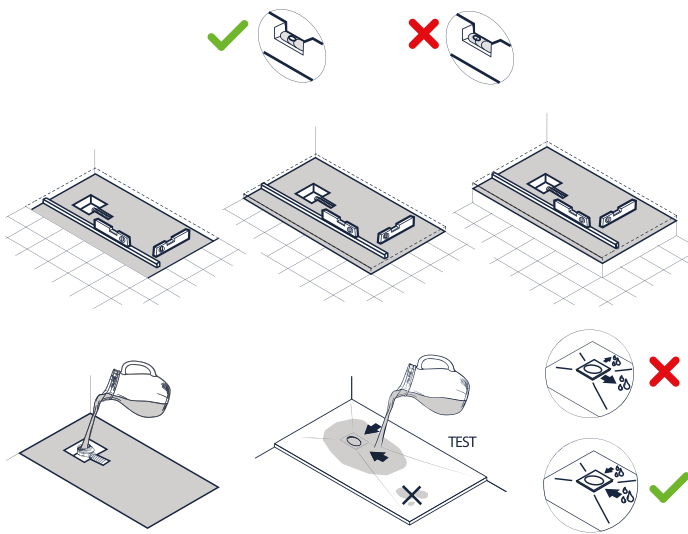
Mesures A and B indicated on pages 6 (Candor) and 10 (Silky), where you will find the measurement from the center of the valve to the base that you want to install.

We also recommend that the minimum measurement between the shower tray and other materials surrounding the base be greater than 5mm.

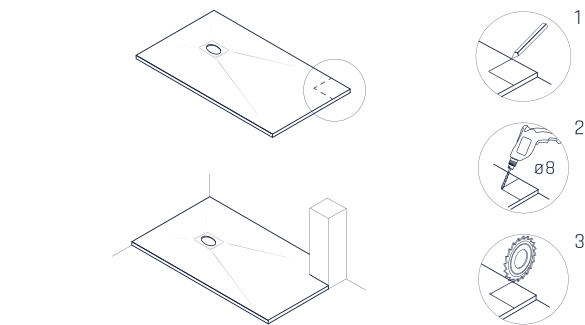


Make sure the application site is properly leveled and with the water drain placed in the right size for the base you want to place.

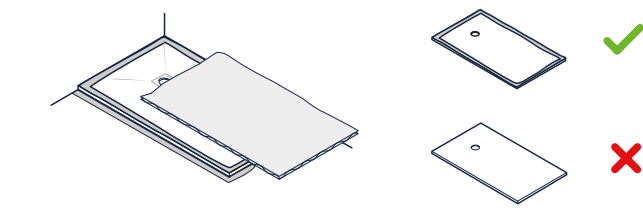
Before applying, check the following:  
- Mesures, Texture, Color and Drainage



Make sure you adjust the base before proceeding with placement, and that it is correct for the space where you are going to place it. Be careful to dont damage the base.

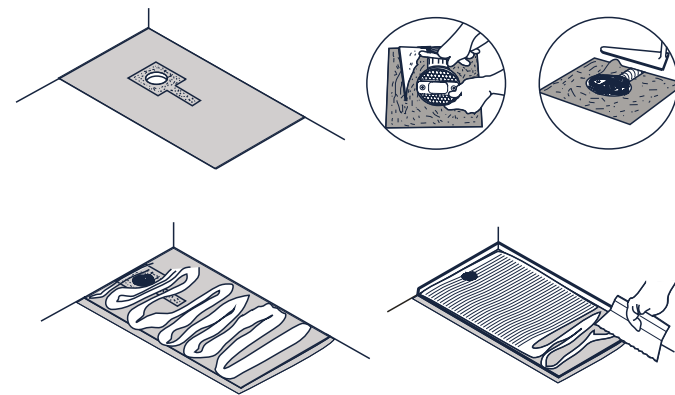


Before applying the shower tray, it is advisable to protect the surface that will be visible from the base and other materials surrounding the space so that during the application they are not damaged by residues of products and tools used in the application.

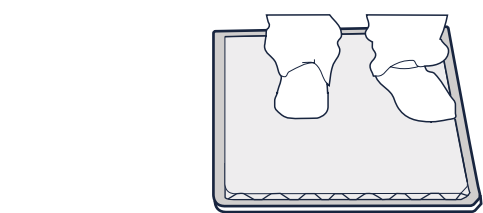


After checking all the aforementioned points, fix the valve, we recommend the use of fine mortar.

Place the Valve in the hole/space shown in the figure. Apply adhesive (Glue and Sealant) based on polymer (Recommended Parabond 600) in the area where the shower tray will be placed. The use of adhesive cement during the application process of any component of the shower tray is not recommended.



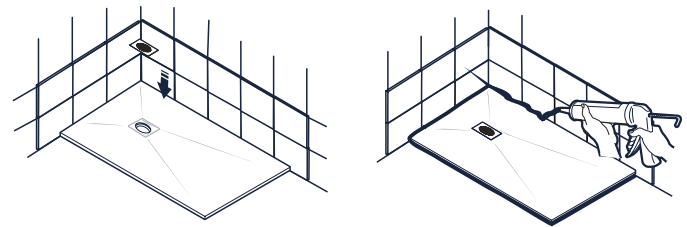
Apply the base in the desired location and apply pressure over the entire shower tray in order to verify that all points of the base are properly joined to the adhesive fixing the base.



We remind you that in the unions of the shower tray with other materials in the space, the minimum space we recommend is 5mm to safeguard the expansion of all surrounding materials such as the shower tray as well.

When verifying that all the products are properly applied, place polyurethane or neutral silicone on the ends so that all the edges, which are joined to other materials, are sealed to prevent infiltration.

And finally, place the grid on the base and it will be ready to use after all the materials are dry and properly placed.







Washbasins

# Countertop Washbasins



**Mumbai** *Transparent glass*

36 x 36 x 11,2



**Turin** *Translucent Glass*

36 x 36 x 11,2



**Genova** *Gold*

36 x 36 x 11,2



**Toronto** *Mate White*

36 x 36 x 11,5



**Zurique** *Transparent Glass with/Pink Background*

36 x 36 x 11,2



**Verona** *Transparent glass with/Gold background*

36 x 36 x 11,2



**Seul** *Gloss White*

36 x 36 x 12



**Londres** *Black/White*

36 x 36 x 12



# Countertop Washbasins



**Pequim** *Gloss White*

 50,5 x 36 x 14,5



**Parma** *Gloss White*

 60 x 45 x 14



**Phuket** *Gloss White*

 61 x 38,5 x 12




**Istambul** *Marbled*

 69 x 45 x 13,5




**Derby** *Gloss White*

 37,5 x 38 x 14



**Briston** *Gloss White*

 44,5 x 44,5 x 14



**Liverpool** *Gloss White*

 69 x 45 x 13,5



**Praga** *Marbled Black*

 69 x 45 x 13,5

Countertop Washbasins



**Berlim** *Gloss White*



48 x 37 x 13



**Meca** *Gloss White/Fit for wall mounting*



40 x 40 x 11



**Vancouver** *Gloss White*



61 x 42,5 x 13,5



**Bangkok** *Gloss White*



61 x 42,5 x 13,5



**Dortmund** *Gloss White*



62 x 41 x 13



**Bruxelas** *Gloss White*



56,5 x 42,5 x 15



**Macau** *Gloss White*



61 x 38,5 x 16



**Marselha** *Gloss White*



45 x 22 x 11



# Countertop Washbasins



Tokyo *Gloss White*



45 x 32 x 11



Malaga *Gloss White*



58 x 40 x 18



Almeria *Gloss White*



40.5 x 33 x14



Badajoz *Gloss White*



52 x 33,5 x 14,5



Estugarda *Gloss White*



50 x 38 x 15



Leeds *Gloss White/Fit for wall mounting*



60 x 30,5 x 13



Badajoz *Black*



52 x 33,5 x 14,5



Badajoz *White/Black*



52 x 33,5 x 14,5

# Countertop Washbasins



Colorado *Mate Black*

50,5 x 40,5 x 14  
● Click-clack valve



Colorado *Mate Cream*

50,5 x 40,5 x 14  
● Click-clack valve



Memphis *Mate Black*

50,5 x 40 x 11  
● Click-clack valve



Memphis *Mate Cream*

50,5 x 40 x 11  
● Click-clack valve



Colorado *Mate Anthracite*

50,5 x 40,5 x 14  
● Click-clack valve



Colorado *Mate Blue*

50,5 x 40,5 x 14  
● Click-clack valve



Memphis *Mate Anthracite*

50,5 x 40 x 11  
● Click-clack valve



Memphis *Mate Blue*

50,5 x 40 x 11  
● Click-clack valve

# Countertop Washbasins



Valencia *Gloss White*

 35,5 x 35,5 x 12,5




Valencia *Mate White*

 35,5 x 35,5 x 12,5




Barcelona *Gloss White*

 62 x 34 x 14,5




Barcelona *Mate Black*

 62 x 34 x 14,5  
● Click-clack valve




Valencia *Mate Black*

 35,5 x 35,5 x 12,5  
● Click-clack valve



Granada *With Pattern*

 41 x 41 x 14  
● Click-clack valve



Barcelona *Silver*

 62 x 34 x 14,5



Barcelona *Gold*

 62 x 34 x 14,5



# Countertop Washbasins



Denver *Gloss White*

 40,5 x 40,5 x 15



Denver *Silver*

 40,5 x 40,5 x 15



Ouviedo *Gold*

 41 x 41 x 14





Ouviedo *Silver*

 41 x 41 x 14



Denver *Gold*

 40,5 x 40,5 x 15  
 Click-clack valve



Denver *With Pattern*

 40,5 x 40,5 x 15



Toledo *Silver*

 41 x 41 x 14



Toledo *Gold*

 41 x 41 x 14



# Countertop Washbasins



Palma *Gloss White*



51 x 36 x 15



Palma *White/Black*



51 x 36 x 15



Palma *Gold*



51 x 36 x 15



Corunha *Marbled*



45 x 40 x 14,5

● Click-clack valve



Palma *Mate Black*



51 x 36 x 15

● Click-clack valve



Palma *Silver*



51 x 36 x 15



Cancun *White/Black*



40 x 40 x 16

● Click-clack valve



Alicante *With Pattern*



48 x 37 x 13

Countertop Washbasins



Las Vegas *Bronze/Mate White*

43,5 x 43,5 x 14,5



Sacramento *Bronze/Mate Black*

43,5 x 43,5 x 14,5



Miami *Gloss White*

69 x 42 x 18



Miami *White/Black*

69 x 42 x 18  
● Click-clack valve



Vigo *Silver*

41 x 41 x 14



Vigo *Gold*

41 x 41 x 14



Miami *Silver*

69 x 42 x 18



Miami *Gold*

69 x 42 x 18



# Countertop Washbasins



San Diego *Silver*



62 x 42 x 11



San Diego *Gold*



62 x 42 x 11



Memphis *Gloss White*



50,5 x 40 x 11



Memphis *Silver*



50,5 x 40 x 11



Moscovo *Gloss White*



38 x 38 x 13



Lille *Gloss White*



40 x 40 x 15,5



Memphis *Gold*



50,5 x 40 x 11



Ceuta *Silver*



41 x 41 x 14

# Countertop Washbasins



**Merida** *Gloss White*

 60,5 x 35,5 x 11,5



**Washington** *Gloss White*

 41,5 x 41,5 x 15,5



**Colorado** *Gloss White*

 50,5 x 40,5 x 14



**Colorado** *Silver*

 50,5 x 40,5 x 14



**Washington** *Silver*

 41,5 x 41,5 x 15,5



**Washington** *Gold*

 41,5 x 41,5 x 15,5



**Colorado** *Gold*

 50,5 x 40,5 x 14



**Lerida** *Gloss White*

 45,5 x 32,5 x 13,5



# Countertop Washbasins



Virginia *Gloss White*

 38,5 x 38,5 x 13,5



Girona *Gloss White*

 36 x 36 x 12,5



Atlanta *Gloss White*

 41,5 x 41,5 x 15,5




Ourense *Gloss White*

 41 x 41 x 12



Charlotte *Gloss White*

 41,5 x 41,5 x 14,5



Ronda *Gloss White*

 50 x 40,5 x 10,5



Orlando *Gloss White*

 49 x 40 x 13,5



Philadelphia *Gloss White*

 40,5 x 40,5 x 11,5

# Countertop Washbasins



Paris



40 x 40 x 12

Gloss White



Murcia

Gloss White /Fit for wall mounting



40 x 30 x 12



Madrid

Gloss White /Fit for wall mounting



50 x 35 x 12



Leon

Gloss White /Fit for wall mounting



60 x 42,5 13,5



Boston

Gloss White



39 x 39 x 12,5



Chicago

Gloss White



55 x 40,5 x 11



Manchester

Gloss White



56 x 38 x 12



Detroit

Gloss White



44 x 44 x 10

# Countertop Washbasins



**Mimo** *Gloss White/Reversible washbasin*



45 x 24 x 10



**Mini** *Gloss White/Fit for wall mounting*



50,5 x 23,5 x 12,5



**Round** *Gloss White w/Hole*



46 x 44 x 82



**Round** *Gloss White Without Hole*



46 x 44,5 x 82



**Quadra** *Gloss White w/Hole*



40 x 40 x 85



**Quadra** *Gloss White Without Hole*



40 x 40 x 85



# Built-in Washbasins

Ceramic Gloss White

## Centered with 1 Sink



- 41 x 41
- 51 x 41
- 61 x 46
- 61 x 37
- 71 x 46
- 81 x 46
- 81 x 37
- 91 x 46
- 101 x 46
- 101 x 37
- 121 x 46
- 150 x 46



## w/2 Sinks



- 121 x 46
- 151 x 46

## Offcenter with 1 Sink

Left or Right



- 80 x 46
- 100 x 46
- 120 x 46



# Built-in Washbasins

Gel Coat 1,2cm Mate White



## Centered with 1 Sink



- 60 x 1,2 x 46
- 70 x 1,2 x 46
- 80 x 1,2 x 46
- 90 x 1,2 x 46
- 100 x 1,2 x 46
- 120 x 1,2 x 46

With and Without  
Hole for tap



## Offcenter with 1 Sink



- 80 x 1,2 x 46
- 100 x 1,2 x 46
- 120 x 1,2 x 46

left/right  
With and Without  
Hole for tap



## W/2 Sinks



- 120 x 1,2 x 46

With and Without  
Hole for tap

# Countertops

Gel Coat 10cm Mate White



## Centered with 1 Sink



- 60 x 10 x 46
- 70 x 10 x 46
- 80 x 10 x 46
- 90 x 10 x 46
- 100 x 10 x 46
- 120 x 10 x 46
- 140 x 10 x 46
- 160 x 10 x 46

With and Without  
Hole for tap



## Offcenter with 1 Sink



- 80 x 10 x 46
- 100 x 10 x 46
- 120 x 10 x 46
- 140 x 10 x 46
- 160 x 10 x 46

left/right  
With and Without  
Hole for tap



## W/2 Sinks




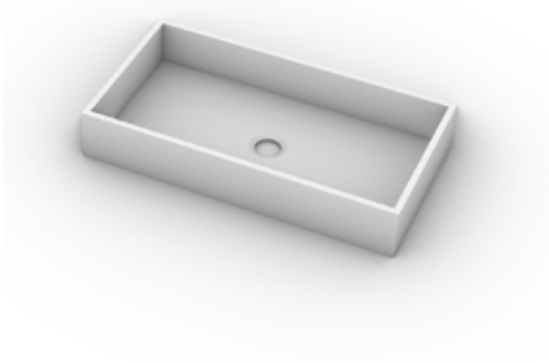
- 120 x 10 x 46
- 140 x 10 x 46
- 150 x 10x 46
- 160 x 10 x 46

With and Without  
Hole for tap

# Gel Coat Countertop Washbasins



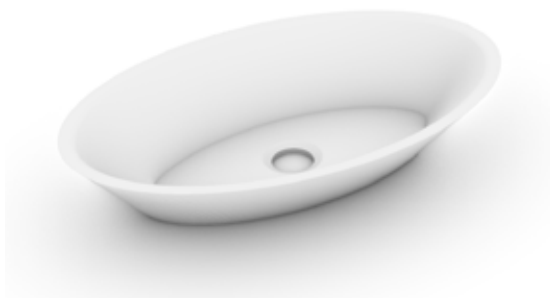
**Veneza**  
  
57 x 16 x 24



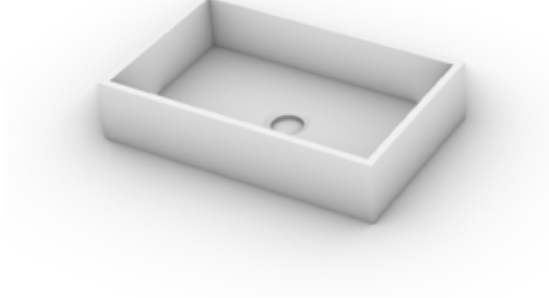
**Viena**  
  
60 x 10 x 32



**Roma**  
  
38 x 10 x 38



**Siena**  
  
53 x 10 x 33




**Florença**  
  
45 x 10 x 28

## Tops in Gel Coat

Gel Coat 1,2cm Mate White



**Without drilling**  
  
61 x 1,2 x 46  
81 x 1,2 x 46  
101 x 1,2 x 46  
121 x 1,2 x 46



# Toilets and Bidet





RimLess  
System



Water Saving.



Easy  
Installation.



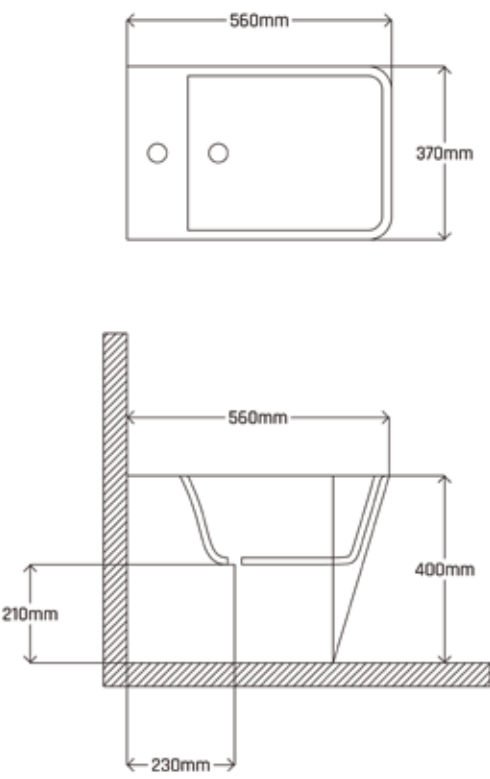
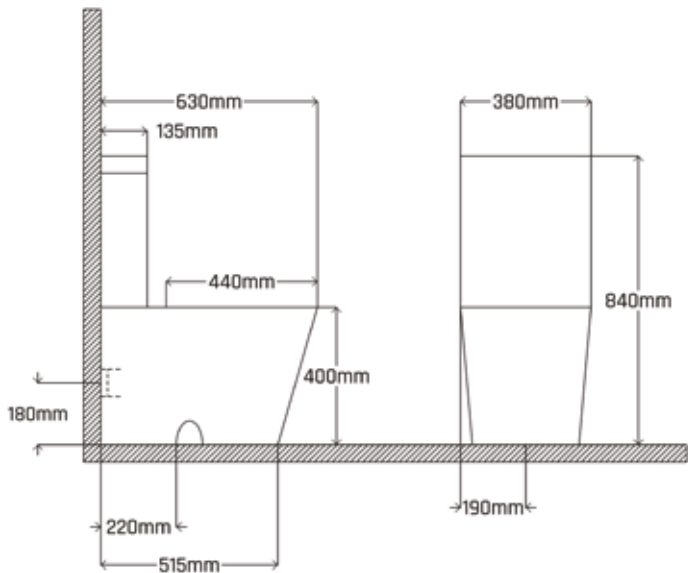
Siphon  
Included.



Termodur worktop with Click Off system,  
with stainless steel hinges with Soft Close.

Toilet  
Gloss White

Bidet  
Gloss White



# Lagos



## Lagos



RimLess  
System



Water Saving.



Easy  
Installation.



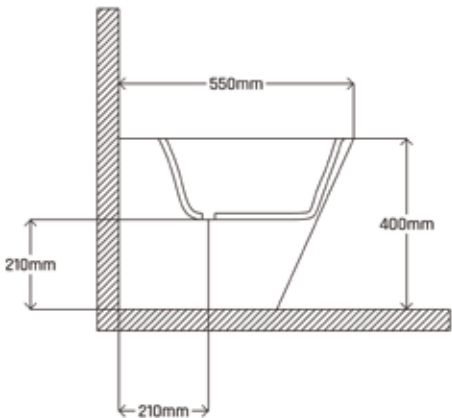
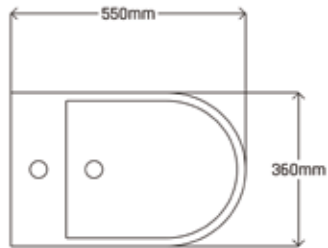
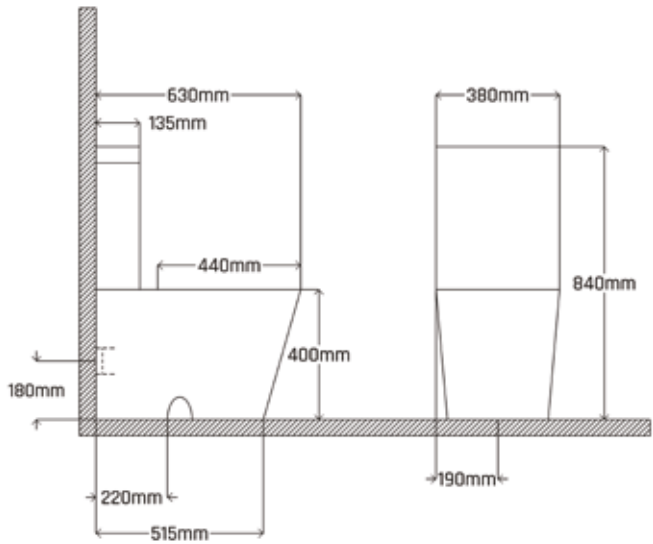
Siphon  
Included.



Termodur worktop with Click Off system,  
with stainless steel hinges with Soft Close.

Toilet  
Gloss White

Bidet  
Gloss White





RimLess  
System



Water Saving.



Easy  
Installation.



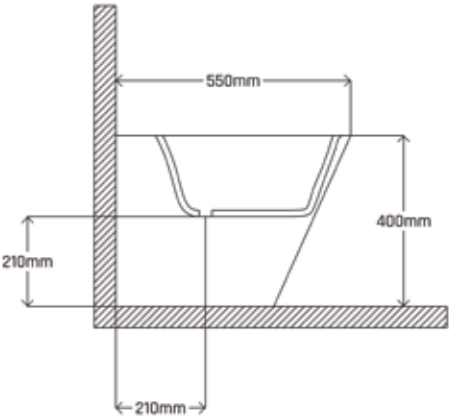
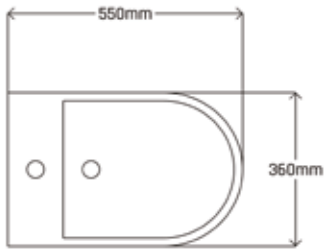
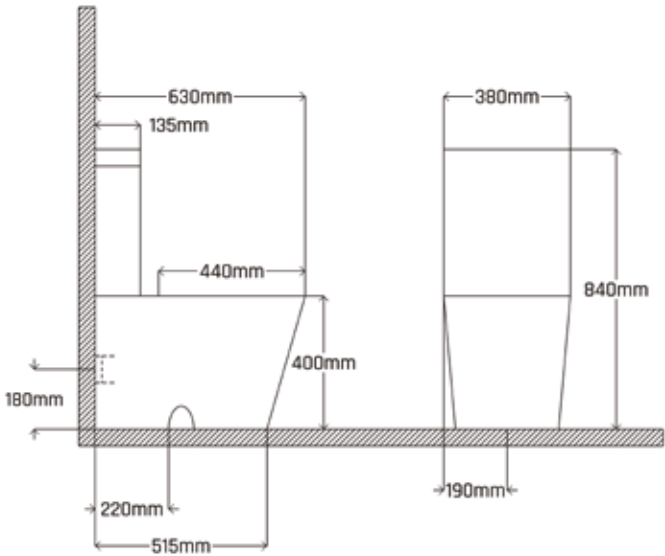
Siphon  
Included.



Termodur worktop with Click Off system,  
with stainless steel hinges with Soft Close.

Toilet  
Mate Black

Bidet  
Mate Black





# Aveiro



## Aveiro



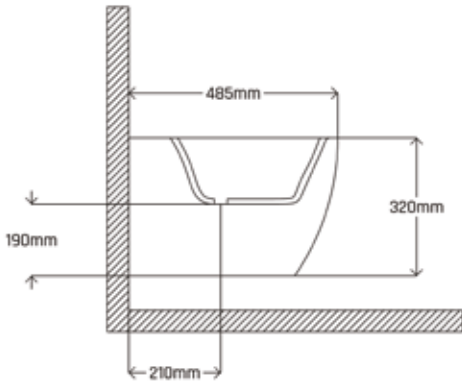
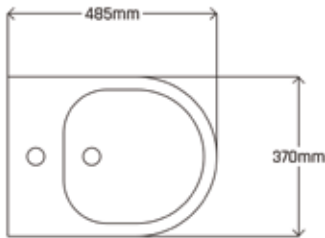
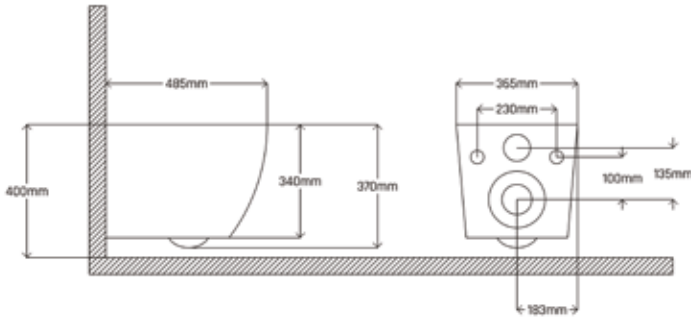
RimLess  
System



Termodur worktop with Click Off system,  
with stainless steel hinges with Soft Close.

Suspended  
Toilet  
Gloss White

Suspended  
Bidet  
Gloss White



# Funchal



## Funchal



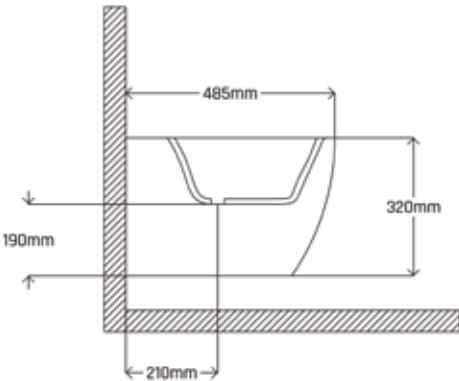
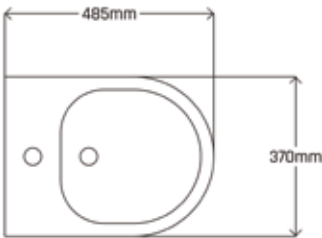
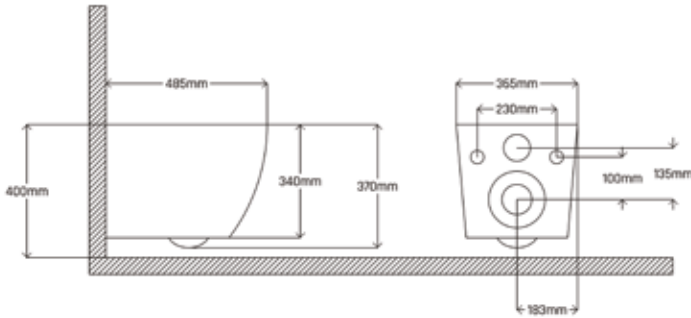
RimLess  
System



Termodur worktop with Click Off system,  
with stainless steel hinges with Soft Close.

Suspended  
Toilet  
Mate White

Suspended  
Bidet  
Mate White



# Faro



## Faro



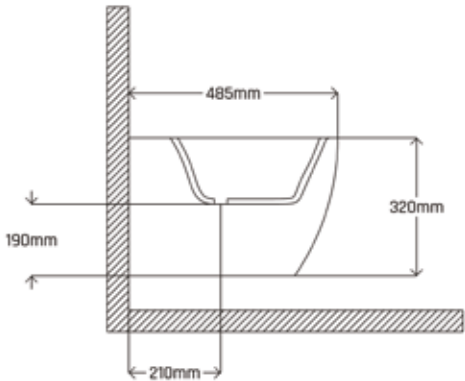
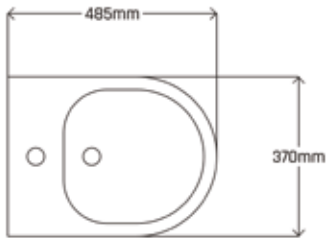
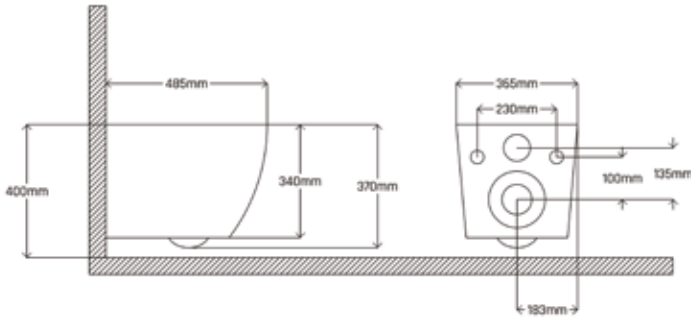
RimLess  
System



Termodur worktop with Click Off system,  
with stainless steel hinges with Soft Close.

Suspended  
Toilet  
Mate Black

Suspended  
Bidet  
Mate Black





# Guimarães



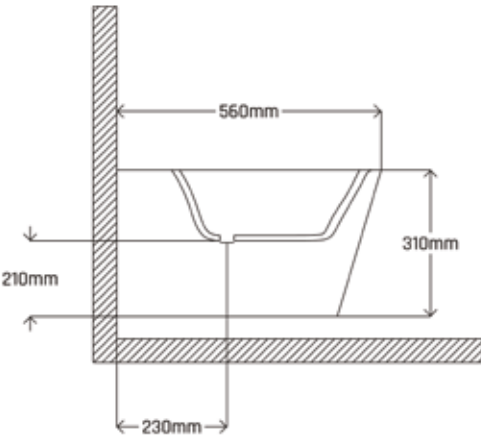
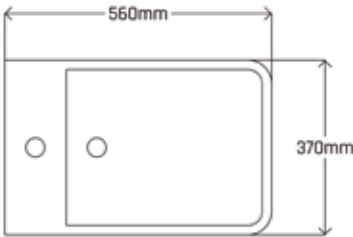
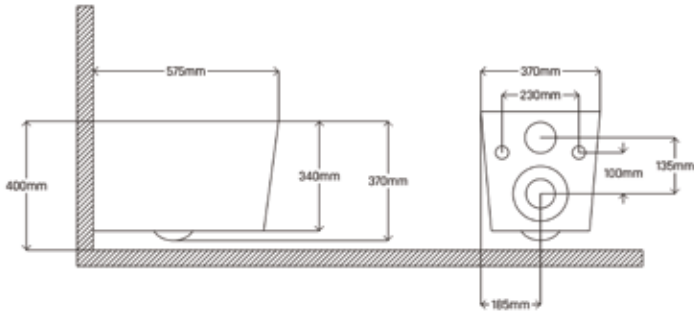
RimLess  
System



Termodur worktop with Click Off system,  
with stainless steel hinges with Soft Close.

Suspended  
Toilet  
Gloss White

Guimarães  
Suspended  
Bidet  
Gloss White



# Lisboa



## Lisboa



RimLess  
System



Water Saving.



Easy  
Installation.



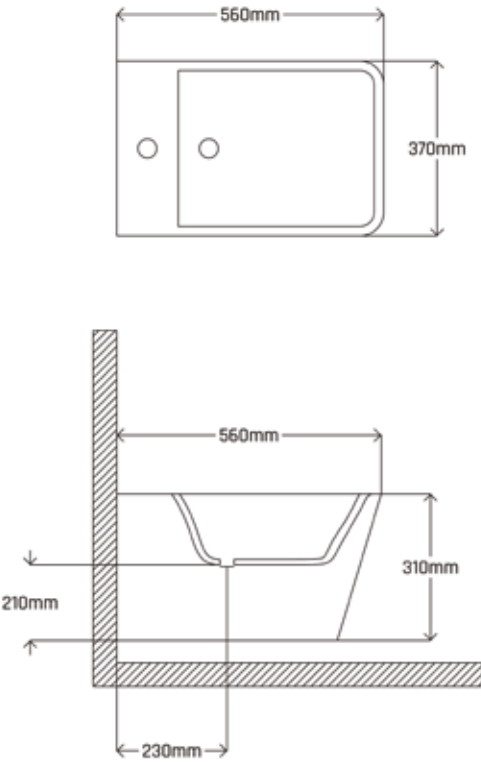
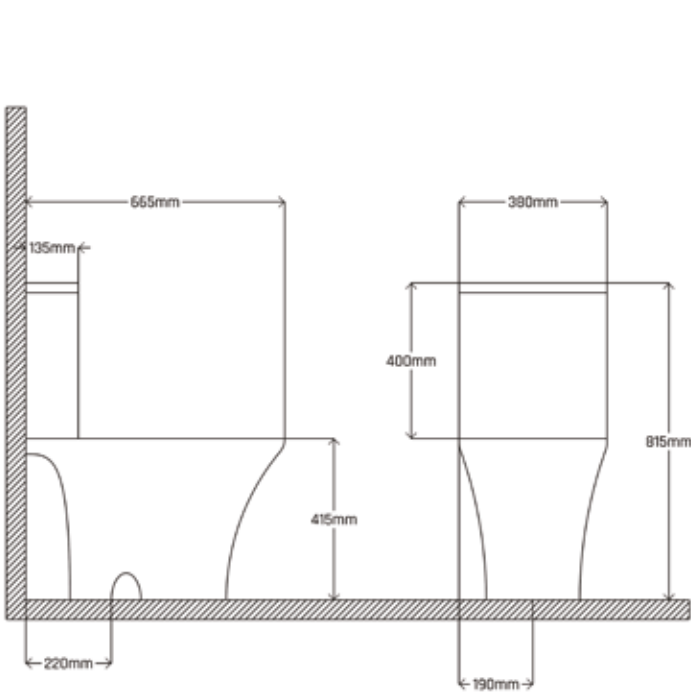
Siphon  
Included.



Termodur worktop with Click Off system,  
with stainless steel hinges with Soft Close.

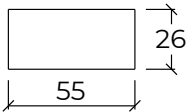
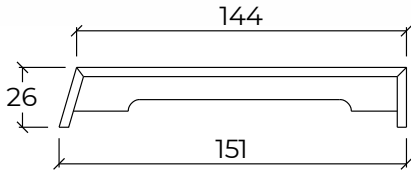
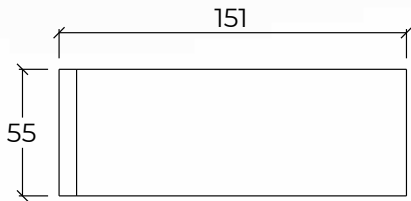
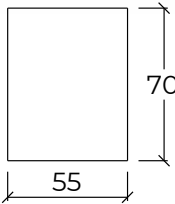
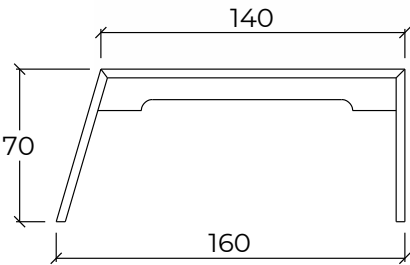
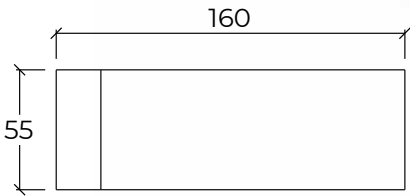
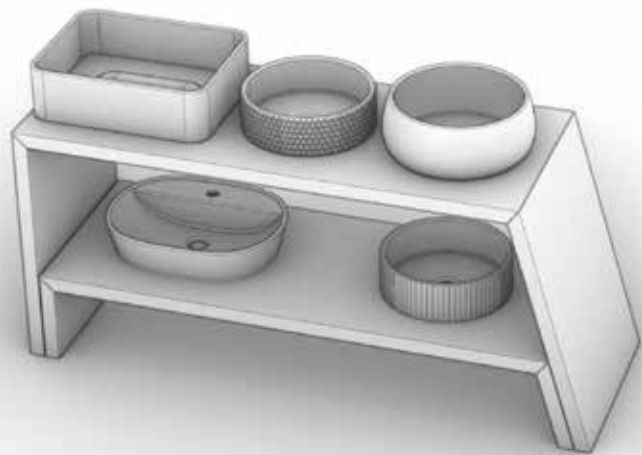
Toilet  
Gloss White

Bidet  
Gloss White



# Washbasins Exhibitor

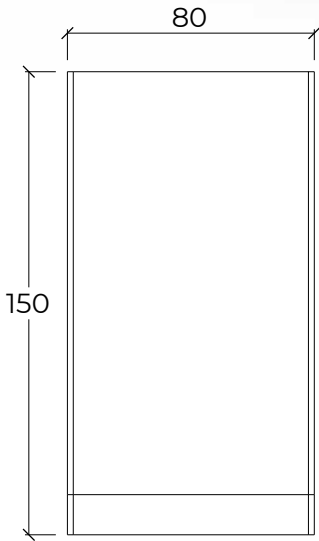
Mate White



Medidas apresentadas em centímetros.

# Showertray Exhibitor

Mate White



Medidas apresentadas em centímetros.





## General Conditions of Sale

1. These General Conditions govern the purchase and sale contract entered into between the company MOOVLUX II, S.A., legal person n.º 516401564, headquartered at Avenida da República, n.º 200, 4730-170 Freiriz, as seller and henceforth designated MOOVLUX, and the Customer, these being the contracting parties.
2. All products not included in the MOOVLUX catalog are special products.
3. When carrying out any purchase and sale agreement with MOOVLUX, the Customer expressly accepts these General Conditions of Sale.

### PRICE OF PRODUCTS

4. The prices of the products are defined in the current catalogue.
5. The Sale Price corresponds to the price in effect during the purchase process and includes VAT at the rate in force.
6. The price of transport and/or delivery, customs fees, transport and packaging insurance, if applicable, is added to the purchase price of the product.
7. MOOVLUX cannot be held liable in the event of a computer error, manual, technical, or of any other origin, that causes a change in the sale price, transport or delivery (including change in the value of discounts) to the public that appears on the MOOVLUX website, so in cases where these are changed, the purchase order will be considered invalid and annulled, the Customer being informed of this fact and the amounts that may have been paid in the meantime will be returned.
8. The prices of the products listed in the MOOVLUX catalog can be changed without prior notice.

### AVAILABILITY OF PRODUCTS

9. All orders require prior confirmation that the product is in stock.
10. MOOVLUX is not responsible for any shortages in stock.
11. In cases where it is not possible for MOOVLUX to ensure delivery of the product within 30 working days, MOOVLUX will credit the Customer for the amount spent, using the same payment method used by the Customer.

### PRESENTATION OF PRODUCTS

12. The products for sale are described and presented according to their original characteristics, according to the information provided by the respective person in charge.
13. MOOVLUX makes every effort to ensure that the information presented to our customer is free of typographical errors and whenever this happens, it will correct it as soon as possible.
14. If the information presented does not correspond to the characteristics of the product, the Customer will have the right to cancel his purchase order.
15. The photographs presented may not correspond to the product described. The reproduction of the articles is the closest to reality.

### ORDER

16. Orders must be sent to the email vendas@moovlux.pt, no other form of contact being accepted.
17. The ORDER number must appear on all correspondence between the parties.
18. In case of cancellation of the order, the price of the products will not be charged.
19. If payment has already been made, the Customer Service will contact the CLIENT to request the necessary information to refund the amount eventually paid. The return period may occur up to 5 working days after all the information has been made available.
20. In any situation, orders cannot be canceled or changed as long as:
  - a) Two days have passed since the date on which the order was placed;
  - b) The product has been dispatched;
  - c) In the case of a special product, the manufacturing process has begun.

### PAYMENT METHODS

21. The payment methods are those announced by MOOVLUX when placing the order, and may vary depending on the product chosen by the CUSTOMER, their area of residence and the available delivery method.

### DELIVERY OF PRODUCTS

22. All purchases will be delivered to the address indicated by the Customer when completing the purchase form.
23. The delivery of the products presupposes the advance or simultaneous payment of the price of the product, as well as the price of transport and/or delivery, if applicable.
24. Deliveries are made during business hours (9:00 am to 6:30 pm), depending on the transport company and the carrier's route, as well as the selected shipping method.
25. Shipping will be carried out on the business day following the completion of the order by MOOVLUX, or on the day on which delivery to the customer is scheduled.
26. Upon completion of the order, delivery will be made within a period of 5 to 10 working days, after confirmation of payment, depending on the destination and the type of transport selected, or if necessary confirmation of payment.

27. The date of completion of the order will be the date specified in the order, which for reasons of force majeure may change.
28. MOOVLUX undertakes, whenever possible, to use recyclable materials.
29. MOOVLUX is not responsible for any damage caused by poor and/or inappropriate packaging, or for any damage and/or loss that occurs after delivery of the products.
30. Failure to meet the production or delivery deadline for the product will not be grounds for a complaint by the Customer, who will waive the right to demand any compensation from MOOVLUX for these delays.
31. Delivery delays due to force majeure, or that cannot be directly attributable to MOOVLUX, will not be a reason for the Customer to cancel the order.
32. The Customer has the duty to check the package and its contents at the time of delivery.

### PRODUCT EXCHANGE

33. Upon delivery, when it is detected that the packaging or the product are damaged, MOOVLUX will exchange the product for an equal one, or at the Customer's request, for a different product of equal or greater value, provided that this is done immediately submit a claim to the carrier.
34. The exchange for products of a higher value than the product in question will be made upon payment of the difference.
35. The exchange must be previously registered with the MOOVLUX support line, via the telephone number 253 080 681 or the e-mail sat@moovlux.pt, indicating the order number, as well as the products to be exchanged, as well as the reason invoked in accordance with the previous number.
36. The products must be returned to the address indicated by the MOOVLUX helpline, or by our driver.
37. The exchange of products will be made by post, and the CUSTOMER must indicate the intended product.
38. In any case, the exchange will only be carried out if the product and packaging are delivered together with the purchase invoice and return note.

### PRODUCT RETURNS

39. MOOVLUX will accept the return of products, provided that it is made within 15 days of receipt of the order by the CUSTOMER.
40. The products must be delivered, in good condition, without having been tried on, in their original and undamaged packaging, together with the purchase invoice and other content.
41. The return must be previously registered with the MOOVLUX helpline, through the telephone number 253 080 681 or the e-mail sat@moovlux.pt, indicating the order number, products to be returned and reason for the return.
42. The products must be returned to the address indicated by the MOOVLUX helpline, the respective costs being borne by the CUSTOMER.
43. When applicable, payment will be refunded within 10 business days from the verification by MOOVLUX of the returned goods.
44. In any case, the return will only be made if the product and packaging are returned together with the purchase invoice and return note.
45. For reasons of health protection or hygiene, the goods supplied by MOOVLUX are not subject to return, when opened after delivery.

### PRODUCT WARRANTIES

46. If there is no product quality specification, the goods and services will be subject to the qualitative requirements that MOOVLUX understands to attribute to them, as well as to the usually applicable industrial quality standards.
47. The products, whenever properly installed and used, will be guaranteed for 24 months from the date of delivery.
48. In order to use the warranty, it will be necessary for the defects to be accepted by MOOVLUX's technical services, and for the defective products to be returned.
49. The warranty only applies to possible manufacturing defects, and MOOVLUX is obliged to repair/replace defective components, and not the entire part.
50. The guarantee cannot be exercised if:
  - a) The installation has not been carried out properly;
  - b) The defect results from adulteration of the product, as well as repair by a person not authorized by the manufacturer;
  - c) The malfunction of the product is due to abnormal wear of the components, due to improper or negligent use/maintenance.

### FINAL DISPOSITIONS

51. MOOVLUX is not responsible for damages caused by the transport and delivery of defective, damaged, inappropriate or external goods to the purchase and sale contract.
52. MOOVLUX may subcontract the contracted services, without requiring any prior notice or consent from the CUSTOMER.
53. Portuguese law applies to all matters relating to these General Conditions.
54. To resolve all disputes arising from this contract, the jurisdiction of the district of Porto is agreed, with express waiver of any other.

# MOOVLUX

Avenida da República N.º 200  
4730-170 Freiriz, Vila Verde  
Braga, Portugal

(+351) 253 080 681  
[geral@moovlux.pt](mailto:geral@moovlux.pt)

[www.moovlux.pt](http://www.moovlux.pt)

---